



SYDNEY, AUSTRALIA

Help Build Our Church!

In the spirit of Exodus 35:5, "*Whoever is of a willing heart, let him bring it as an offering to the Lord,*" we invite you to participate in an important initiative to build St. Mark's Coptic Orthodox Church for future generations.

We Need Your Support Through Monthly Direct Debits (Tax Deductible)

As we aim to secure stable and certain income for these essential projects, we are asking each member of our congregation to consider a **monthly commitment to our building fund for the next three years**. Your generous contributions can be made in the following tiers:

- \$100
- \$500
- \$1,000
- Above \$1,000

Projects to Be Funded

Your donations will directly support several key projects over the next three years, including:

1. **Cornerstone Phase 1: Carpark** – A necessary expansion to accommodate our growing community.
- 2.



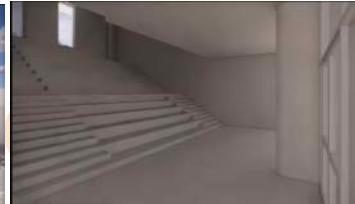
"Whoever is of a willing heart, let him bring it as an offering to the Lord" Exodus 35:5



3. **Extension of Kids Church** – To provide a dedicated and safe space for our children's religious education.



4. **Cornerstone Phase 2** – Further development of our church's infrastructure.



Safe and Simple Donation Process

To make your commitment as convenient as possible, we have partnered with the Commonwealth Bank of Australia (CBA) to facilitate a direct debit system. This method is secure and ensures your contributions are automatically handled every month. To join this vital initiative, please fill out the attached direct debit form attached.

Tax-Deductible Contributions

Please remember that all donations are tax-deductible.

May God bless you and your family for your kindness and generosity.

Please provide your completed Direct Debit form to Magdy Said in the Church Committee Room located next to the Bookshop or in the silver-coloured boxes in each Church.

St. Mark's Coptic Orthodox Church Fundraising Committee, May 2024

"Whoever is of a willing heart, let him bring it as an offering to the Lord" Exodus 35:5